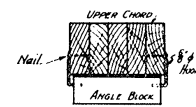
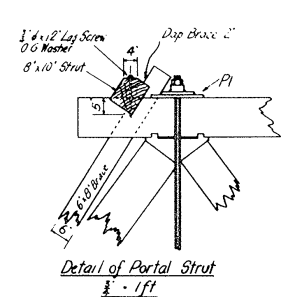
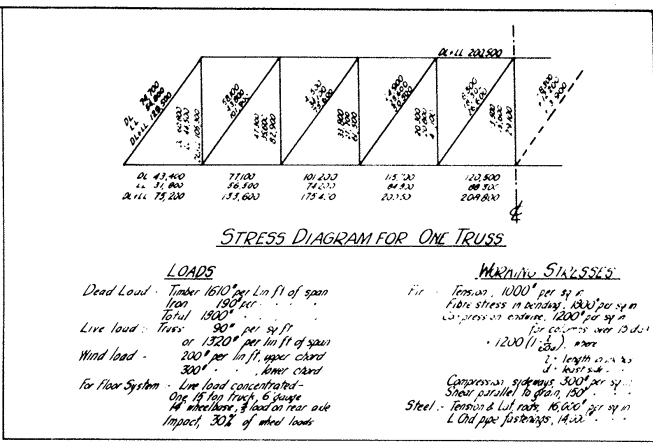


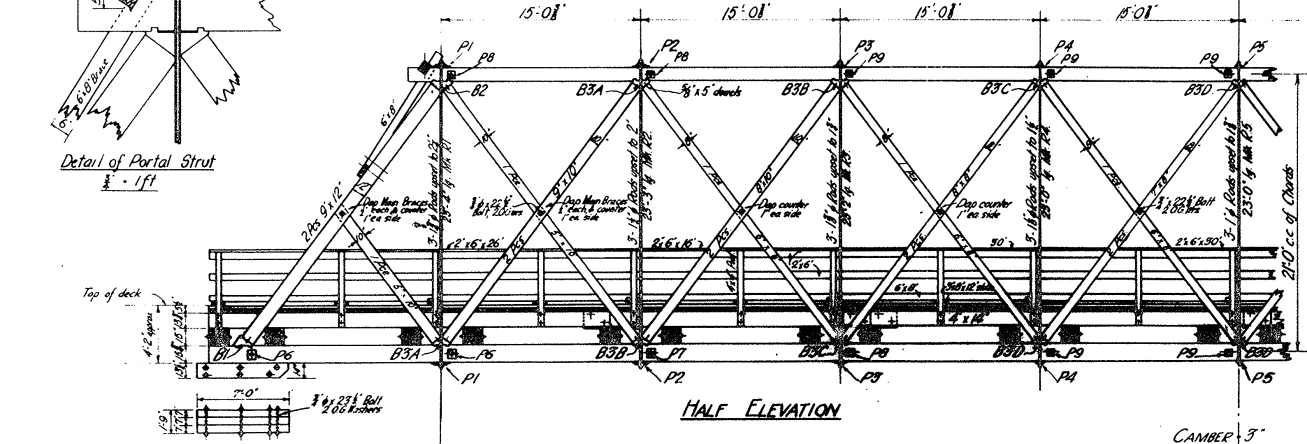
HALF PLAN OF UPPER CHORD AND LATERAL BRACING



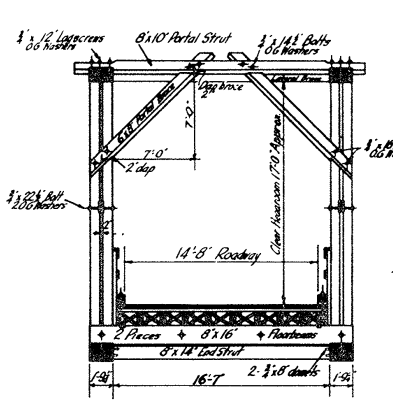
SKETCH OF METHOD OF SUPPORTING ANGLE BLOCKS DURING ERECTION



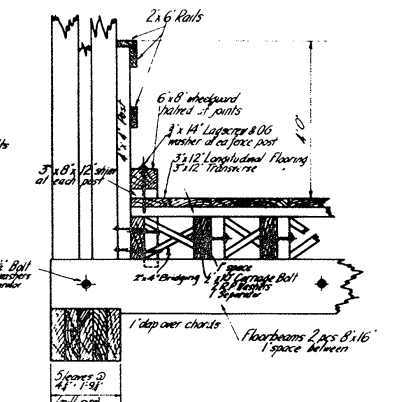
Detail of Portal Strut 1/2" - 1ft



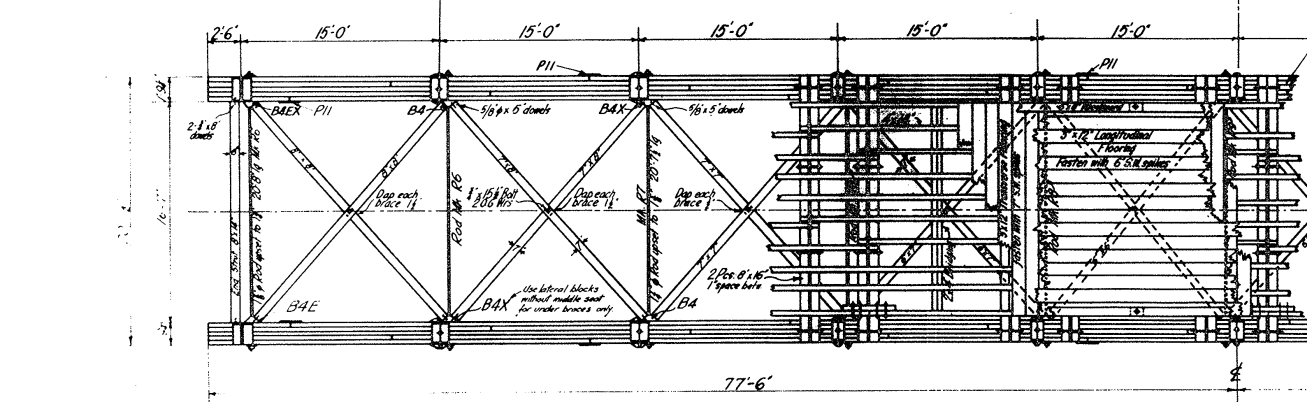
HALF ELEVATION



END ELEVATION

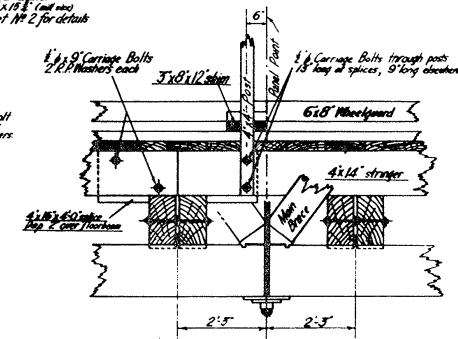


DETAIL OF FLOOR & FENCE 3/4" - 1ft



HALF PLAN OF LOWER CHORD AND FLOOR SYSTEM

Lower Chord Leaves 5 per 44' x 18' 1/2" (full size) See Sheet No 2 for details



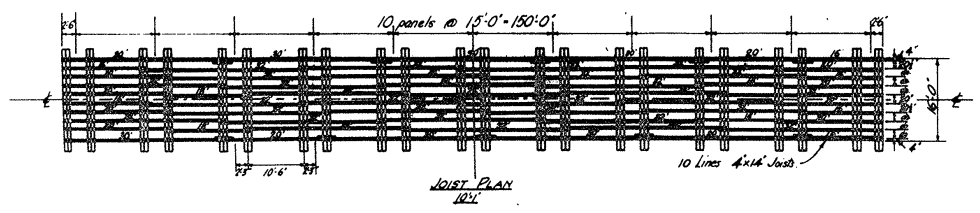
DETAIL OUTER STRINGER BUTT JOINT ETC 3/4" - 1ft

INDEX

General Plan	Sheet No 1
Details of Chords	2
Details of Ironwork	3

150 FT. SPAN THROUGH HOWE TRUSS WITH LAMINATED CHORDS 14'-8" ROADWAY GENERAL PLAN Scale: 1/2" = 1'-0" details 3/4" = 1'-0"

Outer stringer to be built jointed and fastened with 4x16x4'-0" splice piece 4 1/2" x 9" Carriage Bolts 8-12 Washers
 lower stringers secured together at top with 1 1/2" x 10" Carriage Bolt 1 Separator 2-12 Washers



JOIST PLAN 1/2" = 1'-0"

Note: No allowance has been made for shrinkage of timber in cross-grain. Dimensions of 20'-0" out to out of chords and of 1'-0" width of chords are therefore merely nominal. Allow for shrinkage of 1/4" between chords.
 Cover the upper surface of all chords with a coat of waterproof plastic compound, spread over with sand and press down with compass. 500 lbs. required.
 Fill up voids of lower chord angle blocks with angle blocks accepted with full D grade impact, also fill up the spaces in holes around the vertical rods. 450 lbs. required.
 Final lower deck with one coat of concrete oil applied hot, before laying the longitudinal flooring.
 General Revision by N.R.S. Feb. 1932 Revision checked - J.T.H. - Jun. 1932

51700